

Gleaning Farm Info: Agrologists coming to a field near you

To support the long-term viability of the farming industry, the Ministry of Agriculture and the Partnership for Water Sustainability in BC are working together to complete an Agricultural Land Use Inventory (ALUI) for the City of Abbotsford. The project will update information gathered in 2012.

BC Ministry of Agriculture staff will be navigating public roads to observe farmland using binoculars from inside the vehicle or standing at safe roadside locations. Data will be collected on crops, irrigation, livestock and other land uses with the Agricultural Land Reserve.

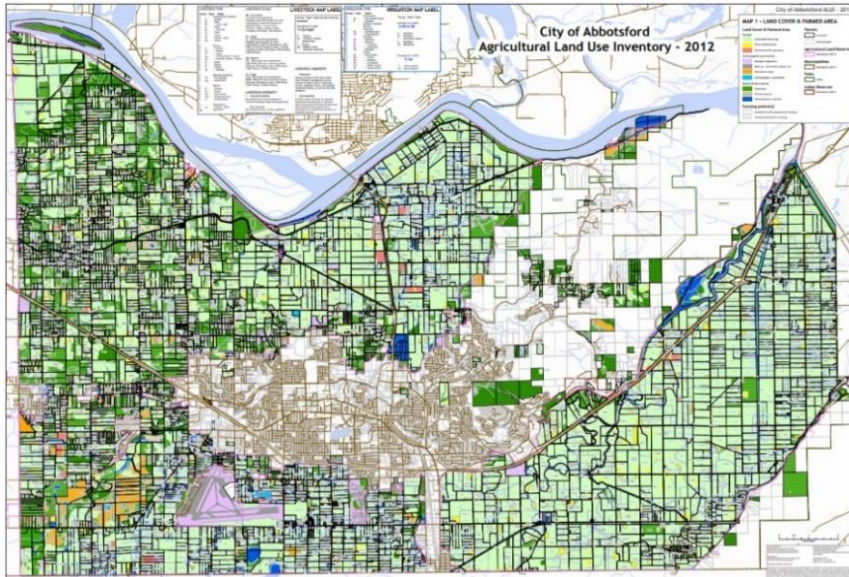
Watch for a grey Dodge Durango with B.C. government decals on the sides, in the City of Abbotsford between July 27 and September 15.

This project is subject to the requirements of the Freedom of Information and Protection of Privacy Act. No personal information is collected or will be included in the final dataset.

Once complete the data will:

- Demonstrate the amount of actively farmed land in the region;
- Provide data to compare against past reports to measure detailed change;
- Assist land use planning including official community plans;
- Enable examination of water management alternatives that consider future land use changes;
- Discover potential impacts of climate change and identify appropriate adaptation strategies; and
- Inform future water storage modelling projects.

Funding is provided in part by the BC Ministry of Agriculture and Agriculture and Agri-Food Canada through the Canadian Agricultural Partnership, a five year (2018-19 to 2022-23), \$3 billion investment by federal provincial and territorial governments to strengthen the agriculture, agri-food and agri-based products sector, ensuring continued innovation, growth and prosperity.



For further information, contact:

Corrine Roesler
BC Ministry of Agriculture
Abbotsford
778.666.0569
Corrine.Roesler@gov.bc.ca

Or

Kevin Eastwood, P.Ag.
BC Ministry of Agriculture
Abbotsford
778.752.5900
Kevin.Eastwood@gov.bc.ca

To learn more about the ALUI program visit:

<https://www2.gov.bc.ca/gov/content/industry/agriculture-seafood/agricultural-land-and-environment/strengthening-farming/planning-for-agriculture/agricultural-land-use-inventories>