



Connective Support Society

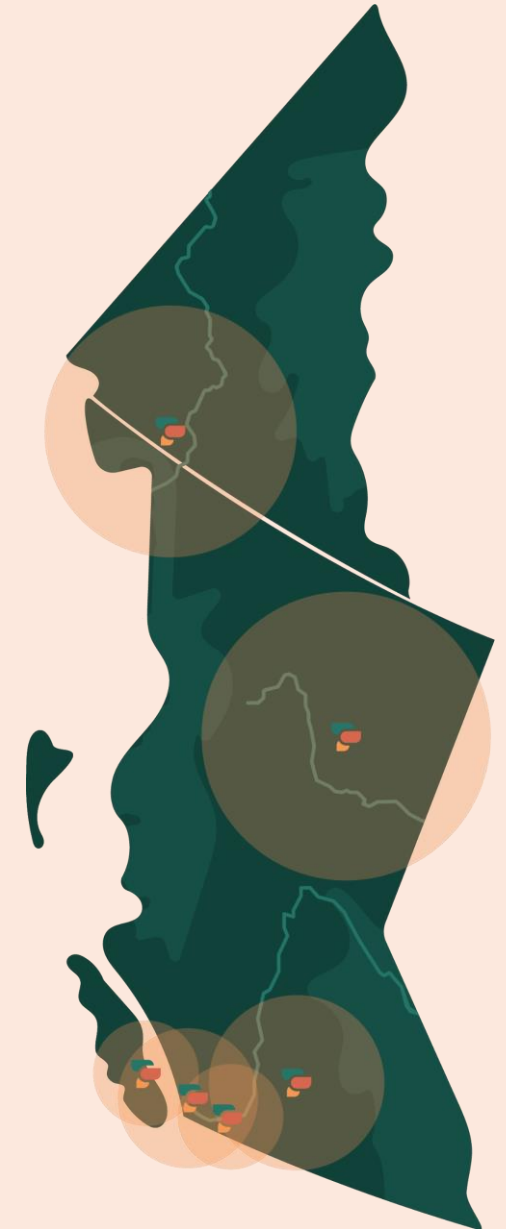
Abbotsford Access - Mental Health

May 15<sup>th</sup>, 2024

# Territorial Acknowledgement

We provide support to people and communities on the ancestral, traditional, and unceded Indigenous territories of the x̣m̄əθk̄əȳ əm (Musqueam), s̄kw̄x wú7mesh (Squamish), sel íl wítulh (Tseil-Waututh), Kway-quit-lum (Kwikwetlem), Kwantlen, Q'e'yc'ey (Katzie), Matsqui, Sema:th (Sumas), ,s̄emi'ɑ:mu: (Semiahmoo), Qayqayt, Stó:lō, s̄c̄əwəθn məsteyəx̄w (Tsawwassen), and other Coast Salish Peoples; on traditional Dakelh territory, home of the Lheidli T'enneh Nation; of the Tk'emlúps te Secwépemc within Secwépemc'ulucw, the traditional territory of the Secwépemc people; as well as the Snuneymuxw First Nations; and the traditional lands of the Kwanlin Dün First Nation, Ta'an Kwäch'än Council, and other Yukon First Nations.

We are honoured to work as visitors on Indigenous land, and do not take lightly the privilege and responsibility of providing culturally appropriate services. To uphold our commitment to providing culturally informed and appropriate services, we work to integrate the wisdom, expertise, and knowledge of Elders, Indigenous Leadership, Knowledge Keepers, Indigenous service users and Indigenous-led community groups in all that we do.



# Who we are

- Connective is committed to facilitating transformative social change in communities across BC and the Yukon
- The Connective approach is person-centered, holistic and community-based
- Our services include reintegration support, housing and homelessness prevention, employment, outreach, Community Living, and other community-based services that create safe, healthy, and inclusive communities



# Our Programs and Services



## Housing

Short and long-term programs  
with wraparound supports



## Community Services

Programming, housing supports,  
and community resources



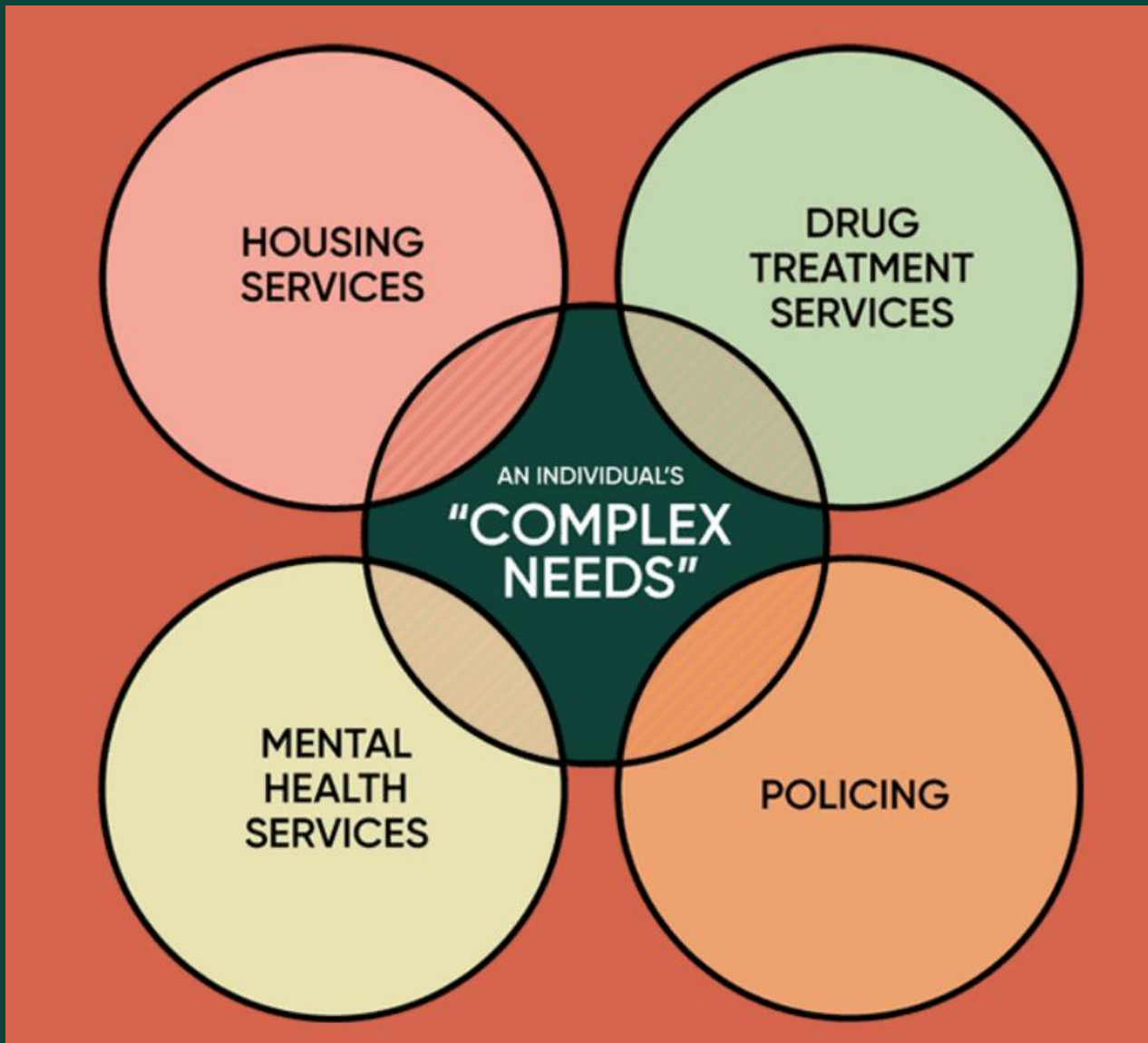
## Outreach Services

Individualized supports to  
promote greater independence



## Clinical Housing

Specialized therapeutic  
programming with clinical staff



“The word ‘complexity’ is really being applied to a group of people who our system isn’t built for”

Dr. Amanda Butler,  
University of BC Department of Psychiatry

We often define complexity by our own failings.

We are not meeting people's needs because the system is not designed for this, so we are the ones establishing what "complex" means - we think that because people move between sectors, they are complex.

In truth, they should be able to move slowly between health, justice, community services, any sector.

# 'INNOVATION'



Embraces risk taking and failure, within a system of safety and structure







# Connective Society

Community Living Outreach Abbotsford





Supporting those in community experiencing barriers,  
so they can achieve greater independence!



**Mental health** is a barrier for our service users. Other factors such as substance use, basic needs not being met, lack of connection with community only compound this.

**Mental health** supports used by our team includes: The Assertive Community Team (ACT), Abbotsford Mental Health Team, the “Hub” as well as Developmental Disabilities Mental Health Services.

Challenges faced for our service users includes housing & mental health supports.



---

Creating a sense of belonging and community for our service users is key!



# Tims Manor / Miyáq'elhá:wetawt

*We are honoured to do our work here on the unceded, traditional, ancestral shared territory of the Semá:th First Nation and Mathekwi First Nation. These two First Nations are part of the Stó:lō Nation, the People of the River*

# Tims Manor

- Our service users are on conditional release while serving a federal sentence and have significant risk ratings, addiction histories, severe traumas, mental health challenges, and considerable impact from institutionalization.
- Residents live semi-independently in two-bedroom apartments with staff onsite 24-7 to assist them with the intersectional challenges they face reintegrating into the community.
- We use a combination of a strength-based, person-centered approach with an increased focus on rapport based, therapeutic interaction. We create a sense of community by bringing what community partners we find to our site.





# Tims Manor

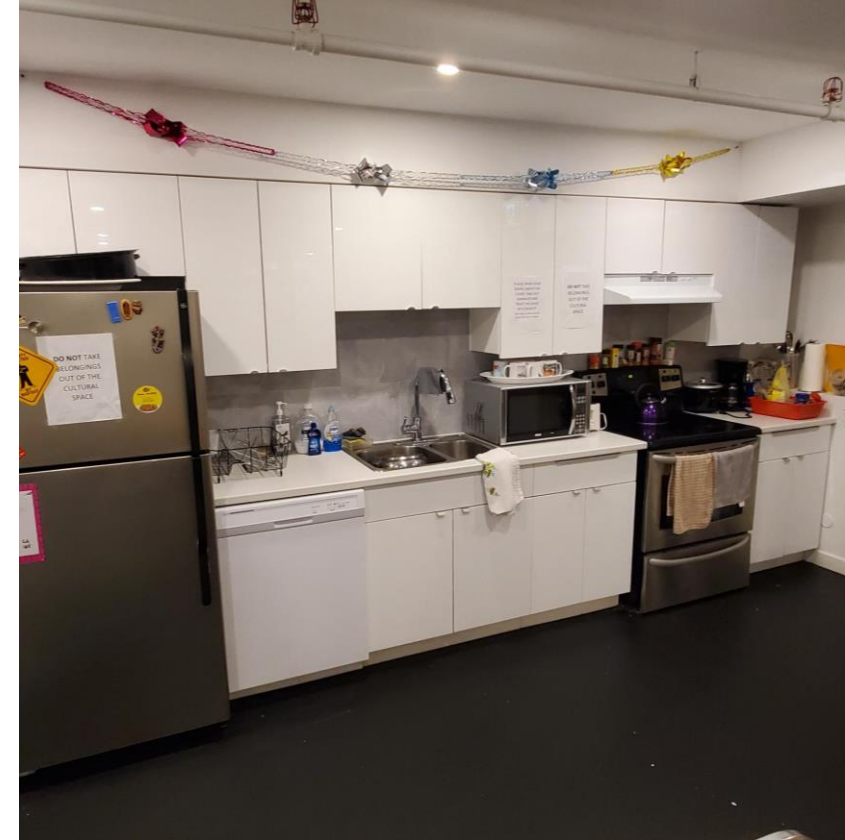
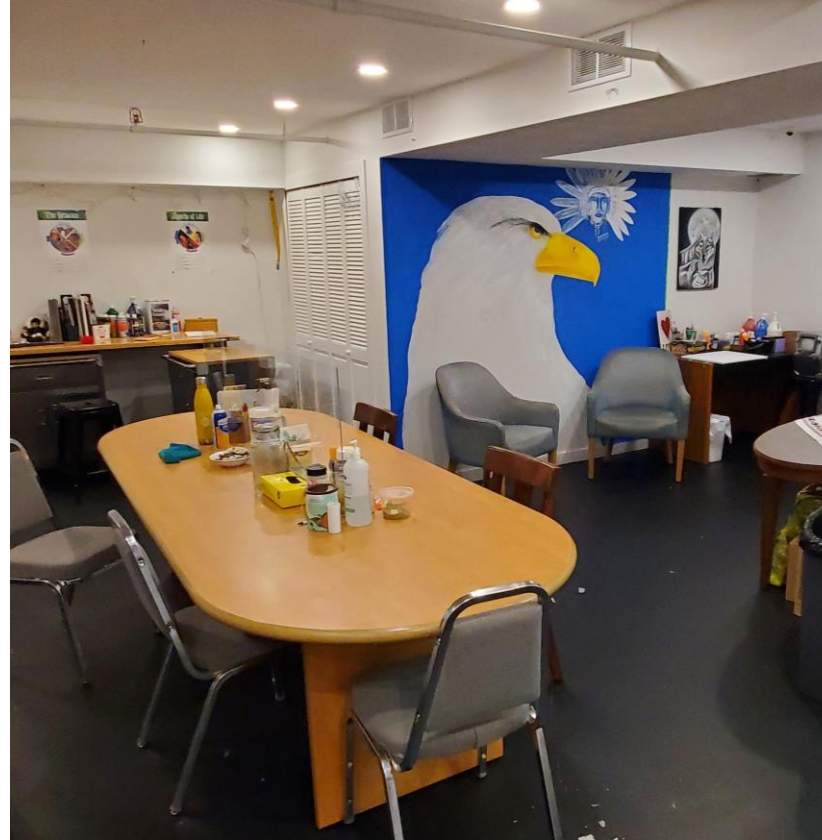
- We have a significant institutional presence focused on collaboration for pre-release planning and are constantly searching for community services and aftercare supports.
- Successful reintegration and maintaining community safety isn't possible without community partnerships.

# Miyáq'elhá:wetawt



- Miyáq'elhá:wetawt is a specialized residential program in Tims Manor that provides the same quality of service and client-centered approach at the heart of all Connective halfway house programs.
- We augment it with access to traditional activities (painting, beading, drum making, carving, ceremonies, etc.) and meaningful community outings organized and supervised by a program specific Indigenous Elder.





## Miyáq'elhá:wetawt

Our Elder provides one-to-one culturally based counseling, spiritual guidance, traditional teachings, liaises with community partners, and mentors our staff team in cultural competence.



# Miyáq'elhá:wetawt

- It was our honour to have our program given a traditional Indigenous name by Elder Frank Charlie and his family. Connective is committed to maintaining the tradition-based program vision approved of by our partners from the Stó:lō Nation.
- We have witnessed significant healing and program successes due to the presence and support from our Indigenous community partners.



Connective Website

[www.connective.ca](http://www.connective.ca)

Jen Hirsch – Director, South Fraser

[jen.hirsch@connective.ca](mailto:jen.hirsch@connective.ca)

Miles McLean – Program Manager

[Miles.mclean@connective.ca](mailto:Miles.mclean@connective.ca)

Adam Strider – Program Manager

[Adam.strider@connective.ca](mailto:Adam.strider@connective.ca)

# Thank You!

